



**NHS**

**South Central  
Ambulance Service**  
NHS Foundation Trust

# **Safeguarding Update**

14<sup>th</sup> March 2023

Associate Director Safeguarding

Sarah Thompson





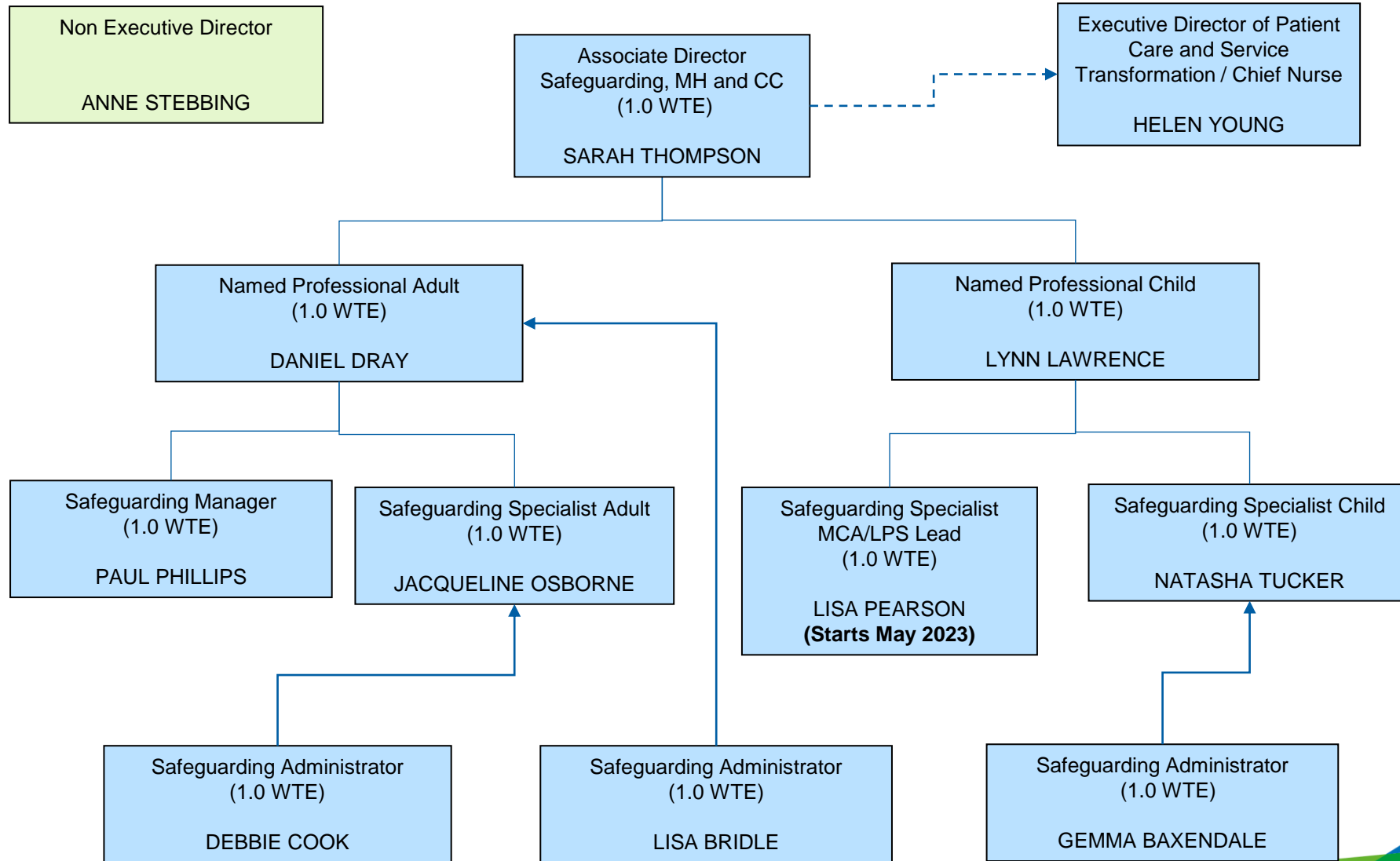
**NHS**

South Central  
Ambulance Service  
NHS Foundation Trust

# Topics Covered

- Safeguarding Team structure
- Safeguarding Phase 1 actions update
- ICB Quality Assurance visit (Dec 2022) / OFSTED
- Safeguarding training update

# Safeguarding Service Team Structure





**NHS**

South Central  
Ambulance Service  
NHS Foundation Trust

# Safeguarding Phase 1 Actions Update

- Issues raised in CQC Quality Review, Main Report and SCAS commissioned Rapid Review:
  - Total Issues: 57
  - Incl. Must Do Issues: 3
- Actions identified to address Issues raised:
  - Total Actions: 84
  - Incl. Must Do Actions: 12
- All Actions to resolve Issues raised completed within Phase 1
- Active planning for Improvement Programme Phase 2 underway



**NHS**

South Central  
Ambulance Service  
NHS Foundation Trust

# Examples of Phase 1 Change

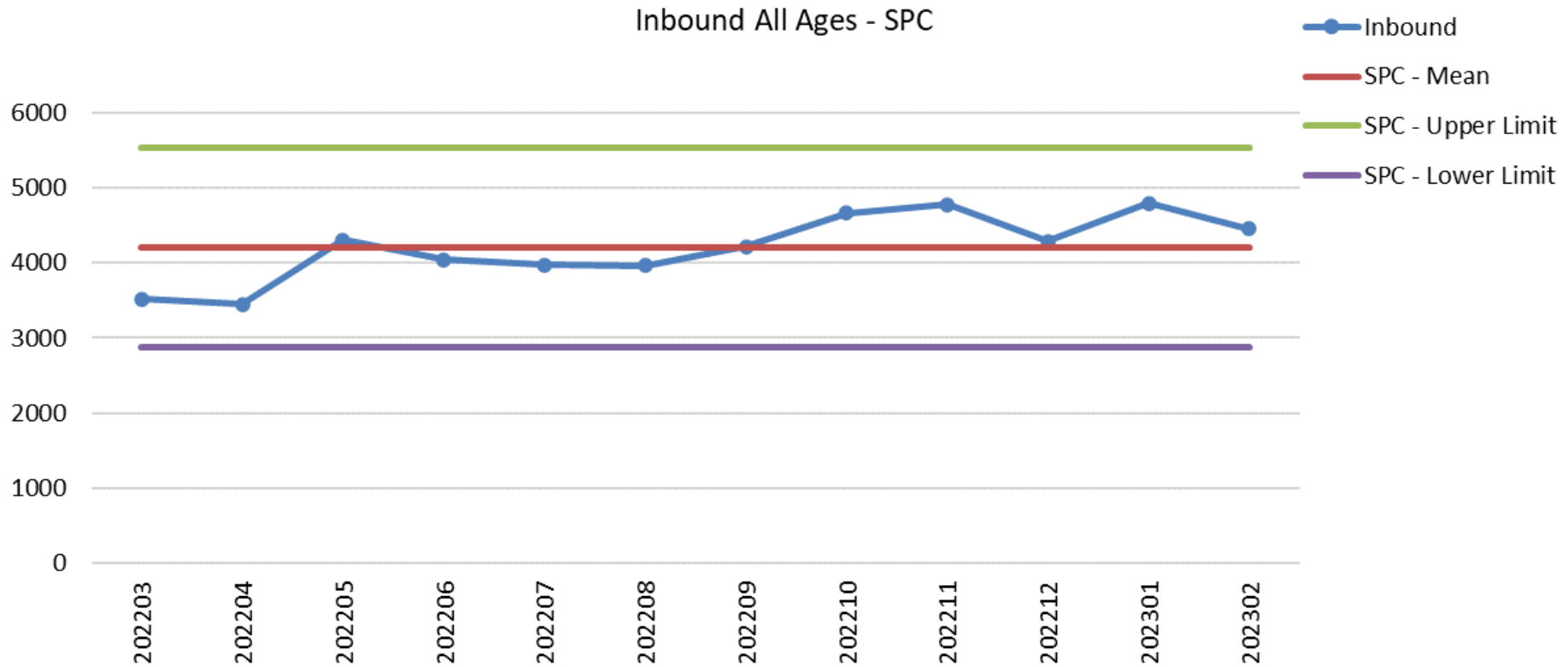
- Implementation of a fully resourced safeguarding team
- Complete review and update of a suite of safeguarding policies
- Review of IT system to support safeguarding referrals
- Audit schedule to include review of quality of referral on monthly basis
- Safeguarding training strategy and operational plan
- Developed workplan aligned to Safeguarding Accountability and Assurance Framework (SAAF) July 2022
- Reviewed safeguarding data dashboard
- Improved allegation management process
- Improved attendance at Safeguarding Boards
- Strengthened reporting mechanisms
- Increased visibility of safeguarding team
- Plaudit programme – safeguarding stars



**NHS**

South Central  
Ambulance Service  
NHS Foundation Trust

# Impact on Safeguarding Activity





**NHS**

South Central  
Ambulance Service  
NHS Foundation Trust

# ICB Quality Assurance Visit (Dec 2022) / OFSTED

- December 2022 Quality Visit by ICB to 'test' evidence provided at scrutiny meetings.
- The visit *has provided additional assurance to that already presented in formal meetings that SCAS have delivered in full the foundation improvements in the quality areas identified within the Section 29a notice.*
- The recent Ofsted report Jan 23 on apprenticeships training stated *The arrangements for safeguarding are effective. Appropriately trained safeguarding staff understand current and emerging s/g trends well. They ensure staff complete mandatory safeguarding training and are kept up to date about safeguarding concerns.*



**NHS**

South Central  
Ambulance Service  
NHS Foundation Trust

# Safeguarding Training

- 7.5 hours safeguarding training agreed for 2022/23
- Safeguarding Training now included in Induction – podcast
- Uniform package for Level 2 – bespoke scenarios for 111,999 and PTS – being delivered now
- Current Safeguarding Level 3 – see trajectory next slide
- Future Safeguarding Level 3 – will be a combination of external and internal programmes
- Priority Group B - PTS and ECA – start date April 2023
- Bespoke already delivered – Allegation Management, Modern Day Slavery, Section 42, DA, DBS planned





**NHS**

South Central  
Ambulance Service  
NHS Foundation Trust

# Safeguarding Training Update



Level 3 Online Workshop Compliance: 56.1%  
(1066/1900 staff identified as Priority A group, incl. honorary staff)

Overall Level 3 Compliance: 62%  
(1045/1686 staff, not incl. honorary staff)

| updated 22/02/23                | %   | No of staff | Comp | Non-Comp | %   |
|---------------------------------|-----|-------------|------|----------|-----|
| Safeguarding Adults (Level 1)   | 95% | 5169        | 4911 | 258      | 5%  |
| Safeguarding Adults (Level 2)   | 95% | 4389        | 4170 | 219      | 5%  |
| Safeguarding Adults L3          | 62% | 1686        | 1045 | 641      | 38% |
| Safeguarding Children (Level 1) | 95% | 5169        | 4911 | 258      | 5%  |
| Safeguarding Children (Level 2) | 95% | 4390        | 4170 | 220      | 5%  |
| Safeguarding Children L3        | 62% | 1686        | 1045 | 641      | 38% |
| Prevent L3                      | 66% | 1686        | 1113 | 573      | 34% |



**NHS**

**South Central  
Ambulance Service**  
NHS Foundation Trust

Thank you